



THE CHINESE CHAMBER OF COMMERCE OF HAWAII

夏威夷中華總商會



LANTERN

NEWSLETTER

June, 2016

EXECUTIVE OFFICERS 2016-2017

President

Mona Choy-Beddow

President-Elect

Gifford K.F. Chang

1st Vice President

Joseph K.M. Hu

2nd Vice President

Tina Au

3rd Vice President

Sherman G.B. Wong

English Secretary

Jonathan Cook

Chinese Secretary

Lily F.K. Tang

Treasurer

Jan Z. Leu

Assistant Treasurer

Michele C. Choy

Imm. Past President

Eddie Flores, Jr.

Executive Vice President

Wen Chung Lin



2016 Installation Banquet

Installation of Chamber's 2016-2017 officers, honor and recognize Chamber annual awardees.



Women and Money Conference

The Chinese Chamber is co-sponsoring this year's "Women and Money - Secure Your Future" conference scheduled for Saturday, August 6, from 8:00 a.m. to 12:30 p.m. at the Japanese Cultural Center Manoa Grand Ballroom, 2454 South Beretania Street. This is a FREE event presented by AARP to empower women to make smart, fact-based financial decisions as they plan for the future. Refreshments will be provided, and on-site parking is available for \$6.00. Registration is required at <https://aarp.cvent.com/womenandmoney8-6>.

Sun Yat-sen Anniversary Forum

On Saturday, August 6, the **Sun Yat-Sen** 150th Anniversary Forum will be held at the *Imin* Conference Center, Keoni Auditorium on the University of Hawaii at Manoa campus, from 8:30 a.m. to 3:00 p.m. The forum is sponsored by Sun Yat-sen Center Foundation and co-sponsored by the Chinese Chamber of Commerce. The \$30.00 forum fee includes a program guide and lunch. On-campus parking is available in the visitor parking lot behind Kennedy Theater; the parking fee of \$6.00 is payable upon entering the campus. Registration deadline is Monday, July 25. Contact the Chamber at 533-3181 if you will be attending.

Chinese Art Exhibition

The Honolulu Museum of Art, 900 South Beretania Street, currently has an exhibition, "Art in a Time of Chaos: Masterworks from Six Dynasties China, 3rd-6th Centuries," which runs through Sunday, August 21. The term "six dynasties" refers to six successive Chinese dynasties in southern China during the periods of the Three Kingdoms (220-280 AD), the Jin dynasty (265-420), and the Southern and Northern Dynasties (420-589). Although a time of civil war and foreign invasion, it was also a period of developments in art, literature, and thought. The period was one of multi-cultural diversity when outside influences from India and Persia came together with traditional Chinese culture. Painting and calligraphy emerged as fully matured art forms while poetry and other literary form reached new heights. The introduction of Buddhism brought about not only changes in philosophy and religion, but also in the arts, especially sculpture.

The capital during the entire Six Dynasties Period was what is Nanjing today. Fittingly, about 115 cultural relics, primarily from the Nanjing Museum and the Shanxi Provincial Museum, are on display and include ceramics, sculpture, calligraphy, and painting. There may be addition items added to the exhibition and perhaps an opportunity for Chamber members to view the exhibit and be given more information by a knowledgeable docent. Stay tuned for more information.



President
Mona Choy-Beddow

I am excited, honored, and humbled to serve as the 105th President of the Chinese Chamber of Commerce of Hawaii.

As the President-elect, I worked closely with our fearless leader, President **Eddie Flores, Jr.**, who has done a tremendous job in moving our chamber forward, revitalizing former events, and establishing the path for which I can continue our goals. Eddie deserves credit for refreshing our Narcissus festival; adding the first annual Moon Festival to the Chamber's mix of events; signing the Memorandum

of Understanding (MOU) with the Korean, Filipino, and Japanese Chambers, and the goodwill tour to the Philippines. This will all play a significant role in the coming years. I also want to thank our executive board members, **Gifford Chang, Tina Au, Joseph Hu, Lily Tang, Jan Leu, Jonathon Cook, Michele Choy, and Robert Yu**, who all worked tirelessly in making last year's events a huge success.

A big *mahalo* also goes out to Michele Choy and **Lynn Ruth** - they coordinated a beautiful, successful installation banquet for us to enjoy. We presented our annual awards to **Warren Luke**, Lifetime Achievement Award; **Henry Ou**, Outstanding Business Person; **Galen Lee**, Outstanding Narcissus Festival Volunteer; and **Brandon Dela Cruz**, Outstanding Chamber Volunteer. We recognized their personal accomplishments and contributions they made to our Chamber. We are grateful for all that you do. Congratulations to all of you!

As we look forward to the coming year, your executive board will focus on increasing business, individual, and the newest "Junior Professional" membership. We will continue to provide exciting and fun networking events and educational seminars.

In addition, as the fourth woman President, one of our new strategic initiatives is to increase membership for women. We will be creating a new leadership program for women and will be sharing other initiatives with you in the coming months.

In order to accomplish our goals and initiatives, I invite all of you to get involved by joining one of our many committees and share your talents and vision with us. Your input, ideas, and expertise will ensure a successful year ahead.

Our next event will be the second annual Moon Festival on Friday and Saturday, September 9 and 10. This year, we are joining forces with our friends at the United Chinese Society and are planning an even bigger Moon Festival for you, your families, and our community to enjoy. We encourage you to get involved, so please contact our Chamber office at 533-3181 to sign up to help or for information.

I look forward to working with each and every one of you in the next year. I thank you in advance for your participation, dedication, and commitment for all your hard work.

Aloha and mahalo, Mona

M E M B E R N E W S

L & L marketing director **Brandon Dela Cruz** was one of those questioned in the June 1 *Midweek* "Poll" on "When can you regift?" That same issue had photo coverage in its "Honolulu Pa'ina" of the L & L Hawaiian Barbecue Aloha Night at the Hilton Hawaiian Village. The event marked the start of the company's annual convention as well as the celebration of its start in 1976. Immediate Chamber past president and L & L founder and president **Eddie** (and **Elaine Flores**), L & L chairman **Johnson** (and **Christina Kam**), and L & L CFO **Elisia Flores** were prominently photographed, with the Flores family members all wearing dark blue L & L t-shirts. Eddie and daughter **Elisia** were also photographed attending the 37th annual Hawaii Prayer Breakfast at the Hawaiian Village while Eddie, Elaine, and Brandon attended the Filipino Chamber's Filipino Entrepreneur of the Year, Young Filipino Entrepreneur, and scholarship award banquet at the Ala Moana Hotel. Finally, former Chamber president **Leonard Kam** (and wife **Lori** and daughter **Lisa**) attended the 18th annual Monsignor **Charles Kekumano** award and scholarship dinner at the Sheraton Waikiki while former Chamber presidents Dr. **Ming Chen** and **Wallace Ching** (and wife **Ann**) were at the **Francis P'i Brown** Team Championship banquet and presumably also played in the tournament at Waialae Country Club.

The June 15 *Midweek* "Pa'ina" was relatively sparse, with only photos from the Palolo Chinese Home golf tournament at the Ala Wai golf course. Those pictured included former Chamber president **Frances Goo**, Chamber board member and Finance Factors CEO **Russell Lau** (and wife **Connie**), Narcissus Queen **Ashley Fu**, and former Chamber president **Vernon Ching**.

Chamber board member and owner of Classic Coins Hawaii Inc. **Douglas Ho** has recently been reconnecting with



Patrick Graham (R) ABR, SFR
REALTOR®



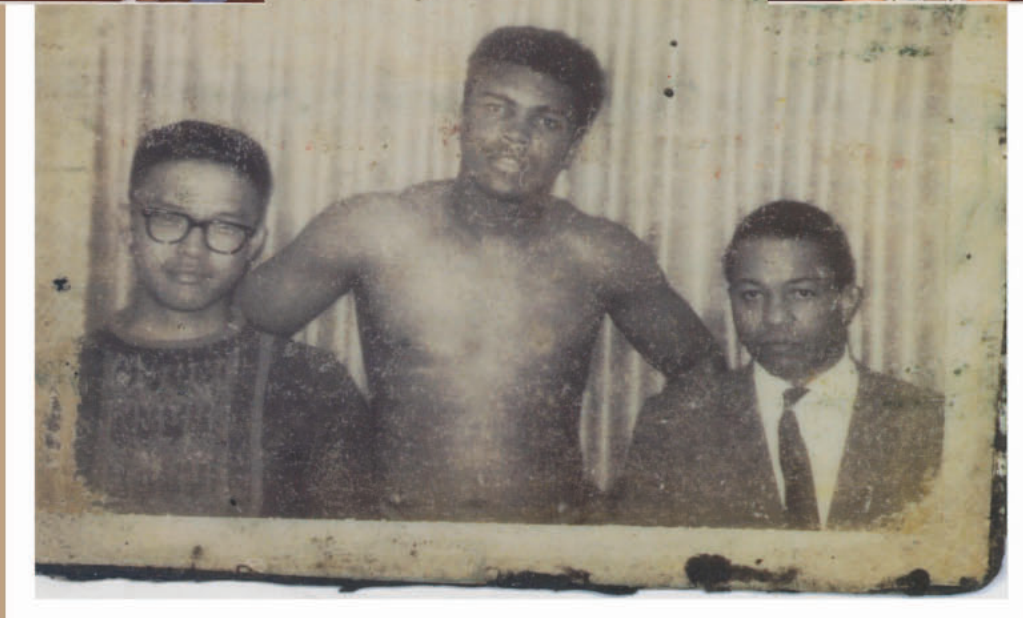
808.387.2942 Cellular
808.262.3131 Direct
808.628-6012 Fax
patrickg@cbpacific.com

Windward Office
970 N. Kalaheo Avenue, Suite C-215
Kailua, HI 96734




Owned and Operated by NRT Incorporated

*In Memoriam to Muhammad Ali
January 17, 1942 - June 3, 2016
The "Greatest" Legend*



Douglas Ho and Muhammdad Ali

CALENDAR OF EVENTS

Jun 5 • Sun
2016 Narcissus Queen
Goodwill Tour departure

Jun 17 • Fri
2016 Narcissus Queen
Goodwill Tour return

Jun 19 • Sun
Father's Day

Jun 22 • Wed
Executive Board Meeting
 Chamber Office – 6:00 p.m.

Jun 28 • Tue
Board of Directors Meeting
 Empress Restaurant – 12:00 p.m.

July 4 • Mon
Independence Day

Aug 6 • Sat
Women and Money Conference
 Japanese Cultural Center Manoa
 Grand Ballroom – 8:00 a.m. to 12:30 p.m.

Aug 6 • Sat
Sun Yat-sen 150th Anniversary Forum
 Imin Conference Center, Keoni Auditorium, University of Hawaii at Manoa campus – 8:30 a.m. to 3:00 p.m.

MEMBER NEWS



Hue, Vietnam
April 1969

Hue, Vietnam
April 2016

his past. April saw Douglas return to Vietnam after 48 years to visit the battlefields where he served for a year as an Army field artillery officer. He arrived in Vietnam in the summer of 1968 with advance elements of the 5th Infantry Division (Mechanized). After six months with the “Red Devils” in Quang Tri province, Doug was assigned to the “Screaming Eagles” of the 101st Airborne Division at Camp Eagle, in Phu Bai, southeast of Hue. Then on June 3, his friend since 1968, three-time (1964, 1974, and 1978) world heavyweight boxing champion, **Muhammad Ali**, passed away in Scottsdale, Arizona.

Doug’s long-time friendship and involvement with “the “Greatest” was featured on “Breaking News” on KITV and KGMB/KHNL’s Hawaii News Now that day.

The June 19 *Honolulu Star-Advertiser* included its annual “Hawaii’s Best.” In a number of “Food and Dining” categories, Chamber member owned and operated businesses excelled: Best Chinese Food – #2 Jade Dynasty (**Alan Ho**); Best Diner/Drive-Inn/Dive – #3 L & L Hawaiian Barbecue (**Eddie Flores, Jr.**, and **Johnson Kam**); Best Fast Food – #1 McDonald’s (**Victor Lim**, 6 franchise locations); Best Italian – #3 Assaggio (**Thomas Ky**); Best Manapua – #2 Royal Kitchen; and Best Vietnamese Food – #1 Ba-Le Sandwiches & Bakery (**Thanh Quoc Lam**). Congratulations to each of you and best wishes for your continued success.

According to the June 21 *Star-Advertiser*, McDonald’s franchisee (6 locations) and former Chamber president **Victor Lim** is the president-elect for the United Chinese Society. Victor was photographed at the June 12 United Chinese Society Model Father and Mother of the Year banquet at the Empress Restaurant.

New Members

At its May 31 meeting, the board of directors approved the membership applications for **Belinda Lau**, human resources director, Hawaii Tech Support (recommended by **Mona Choy-Beddow**); **Xiaoyan Su**, senior manager, Spire Hawaii LLP (recommended by **Yen Chun**); and **Michelle Wong**, Realtor® and property manager, Ideal Properties, Ltd. (recommended by **Mona Choy-Beddow**). Welcome to the Chamber and we look forward to meeting you at the next membership event.

The LANTERN a monthly publication
 of the Chinese Chamber of Commerce of Hawaii
 8 South King Street • Suite 201
 Honolulu, Hawaii 96813
 Ph: (808) 533-3181 / 533-3886 • Fax: (808) 537-6767

Editor: Gerald Y.Y. Chang
 Graphic Designer: Angela Wu-Ki
 Staff: Wen Chung Lin, Lucia Liang



THE CHINESE CHAMBER OF COMMERCE OF HAWAII
 8 South King Street • Suite 201 • Honolulu, Hawaii 96813